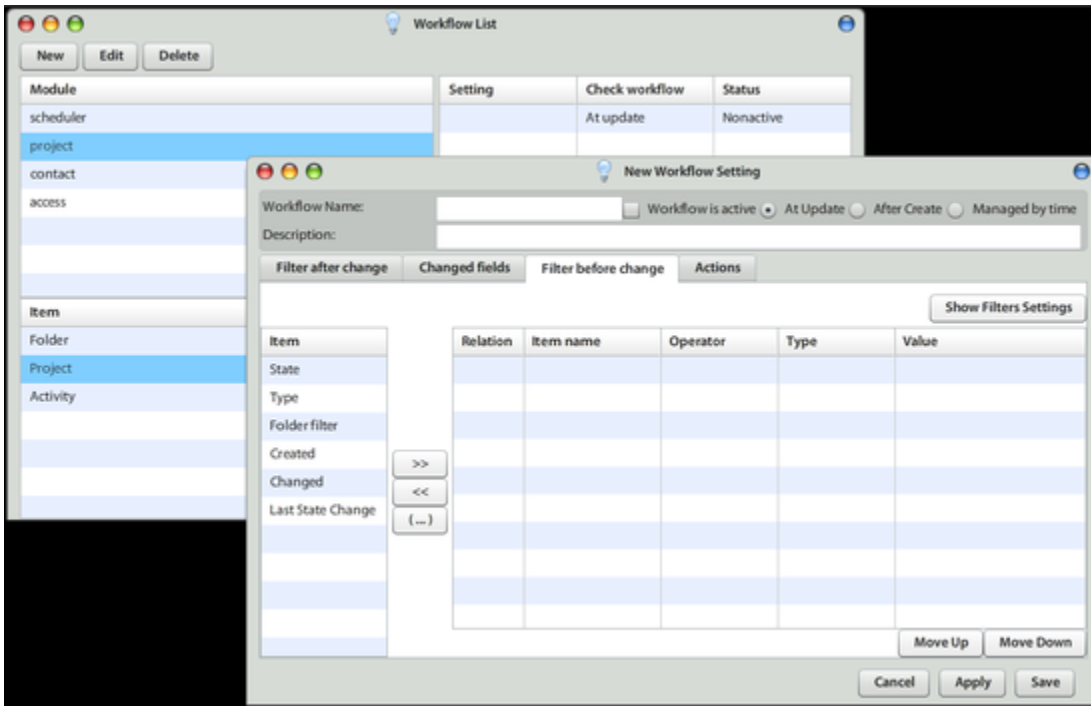


Here your creation of Workflow starts. Workflows are stored under module & module domain sections.

Workflow is set of [Actions](#) executed based on event or time that may occur on filtered set of Atollon objects. Workflow is executed by Atollon Trolls on server side automatically, once the Workflow is set as Active. Workflow Action may be triggered based on updating some object or after it's creation. This workflow is executed immediately and may run in background (invisible Action) or may require user's input. In case the Workflow is based on time, Atollon Trolls check whether some Workflow meets the filter conditions every 15 minutes automatically.

Workflows can be designed as very granular activities running one or more Actions only. The Business Process itself is much more complex and therefore may contain several Workflows.



Learn how to [Create new workflow](#).